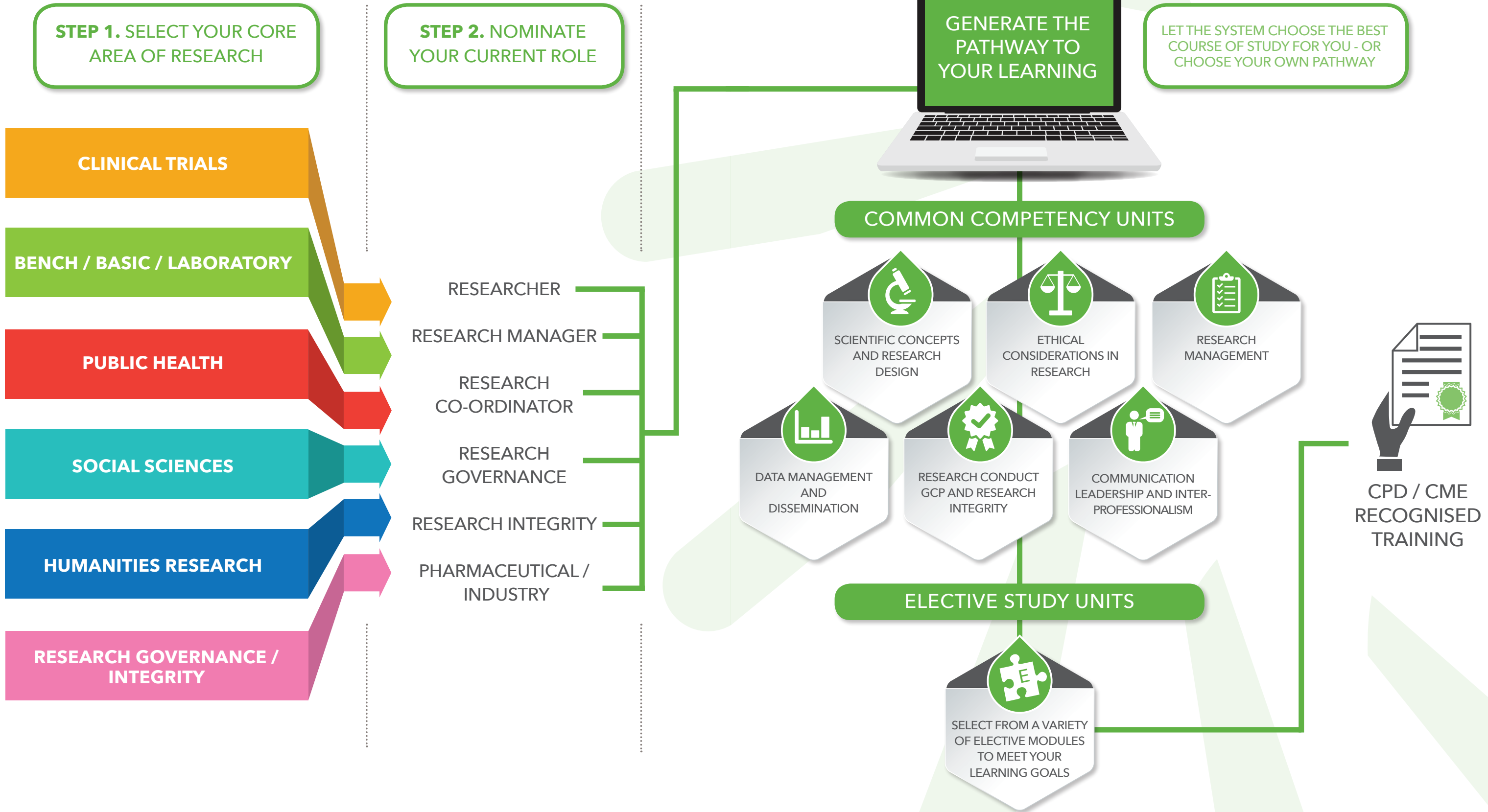


RESEARCH ESSENTIALS

DEVELOPING EXCELLENCE IN RESEARCH DESIGN AND PRACTICE

In July 2016, we will launch our flagship competency based training model that will provide a comprehensive and unique training experience for Researchers, Research Coordinators and Managers and the broader research workforce.

This course will offer flexible, CPD accredited, modular based training that applies internationally accepted competency frameworks. **PRAXIS** Australia has partnered with Harvard University MRCT to bring this competency framework to the Australian research sector.



INTERESTED?

How to >> find out more information >> register your interest >> enrol >>

Contact PRAXIS Australia

Call 08 8122 4576, email info@praxisaustralia.com.au or go to www.praxisaustralia.com.au

Why should I do this course?

All researchers need to be skilled in all aspects of their craft and be able to respond to the demands for rapid innovation. This course offers a unique model of education that allows members of the research workforce from a diverse range of disciplines to undertake flexible, affordable and contemporary training that is self-paced and individually tailored. This course offers a constant source of expanding modules and electives that reflect the changing nature of research in the Australian setting.

How does it work?

Through a unique, purpose built interface, the Research Essentials course allows participants to select their own courses of study across the various competency domains, modules and electives. Alternatively, the system can design a course of study especially for you, based on your individual needs, particular areas of interest and your current roles. *Design your own adventure or let the system design one for you!*

How does the system choose the right course for me?

On entry into the learning portal, you will be asked to provide some basic information, including your areas of interest and discipline, followed by your current research role. Based on this information, the software will select an appropriate course of study from across the various competency domains and electives to ensure that you receive the training most appropriate to your needs.

Can I choose my own course of study?

Certainly! One of the greatest benefits of the Research Essentials course is that it has inbuilt flexibility that enables participants to devise their own courses of study – from single modules right up to full programs.

How long does the course take to complete?

This will vary depending on what you require – and whether you choose an entire course, a single competency domain, an elective or a module. Some definitions are useful here:

Course: A **course** is comprised of a combination of **competency domains** and **electives**. Depending on your area of interest and current role it may comprise up to 60 modules and electives across all domains. A minimum of 30 modules and electives across all the domains will constitute a course, if you self-select your own program of study.

Competency Domain: The six internationally accepted **competency domains** are described overleaf. Each of these domains comprises various individual **modules**.

Modules: A **module** is a single unit of study that takes about an hour to complete. The length of time it will take you to complete your course of study will therefore be determined by the number of modules you select.

Electives: **Electives** are individual units of study that either extend modules within the common competency domains or cover areas of interest outside them. The completion time for an elective is about two hours. The number of electives will be expanded over time as we continue to develop our resources in response to need and a changing research landscape.

Can I complete the study in my own time and at my own pace?

Yes! The course has been designed to accommodate the competing commitments of a complex workforce. You can choose the course of study that suits you and you can pace your learning to reflect your personal needs. The course is designed to add value to your career, not to distract you from your other responsibilities!

Is the course only available online?

Research Essentials has principally been designed for an online environment. We will, however, also provide face to face workshops to deepen the learning experience and promote peer interaction and discussion.

What accreditation will I receive at the end?

Participants will receive certificates of completion from PRAXIS on completion of each module, elective, competency domain or course, detailing the modules studied that can be used to accrue CPD. We are also working with a number of professional bodies to have this course endorsed.

How much does it all cost?

PRAXIS Australia is a not for profit company committed to supporting the research sector through the creation of new services. We recognise that cost can be a major barrier to access to professional education and have therefore priced this course well below current market prices for tertiary style programs. Actual costs are as follows:

Full course: \$2000

Competency Domain: \$750 per competency domain

Single Elective: \$250

Single Module: \$150 per module

Institutional and group discounts can also be negotiated as can tailored packages for individuals or institutions.

Do I need to have any pre-requisite skills and knowledge?

No – just a passion to learn!

Will support be available if I need help during the course?

At PRAXIS we are very proud of the level of support our students receive. This includes personal interactions with our course management staff, Directors and our pool of expert advisers as necessary. We are also considering the addition of a mentoring component to this course at some point in the future.

How can I find out more information?

Our team is always happy to talk with you to answer your questions or provide guidance and assistance. You can contact us in the following ways:

Email: info@praxisaustralia.com.au

Subscribe: Subscribe to our updates via our website

Enquire: Lodge an enquiry form via our website and our staff will call or email you back

Enrol: Enrol at any time using our on line enrolment form, also on our website

Call: Call us at any time during normal office hours on 08 8122 4576